

WAYZATA YACHT CLUB
AIS FLEET
BAYFIELD, WI



Wayzata Yacht Club – Apostle Island Station

2018 Championship Series

Sailing Instructions - Amendment 1

SI 9.2 has been amended to include the revised Appendix B for MD, JAM, and Multihull fleets. See the new attached Appendix B containing the updated charts, and approximate waypoint locations for mark locations.

SI 8.1.5 has been added. A virtual waypoint named NOMAD will be used for the Bill Hulings Around Madeline Race. NOMAD is located at N46 51; W90 33.

SI II.4 has been added for the Bill Hulings Around Madeline Race. The Race Committee (RC) will be on station to take finishes until 1800 hours. Boats finishing after this time shall record their finish time, and the identity of the boat ahead, and boat astern if possible. Finish times shall be given to the Organizing Authority or RC as soon as possible.

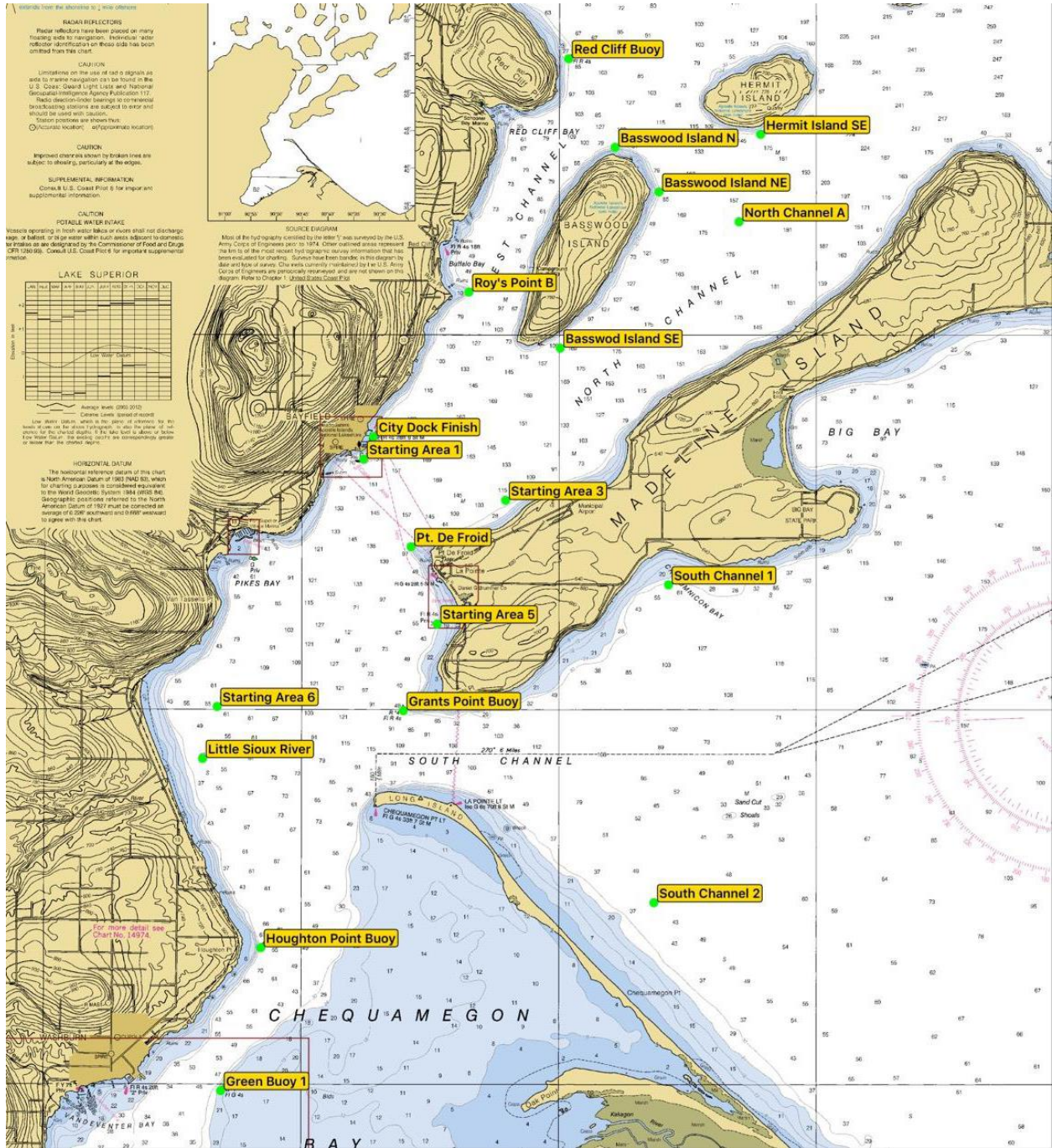
Dean Drevlow

PRO

8/30/18 0930



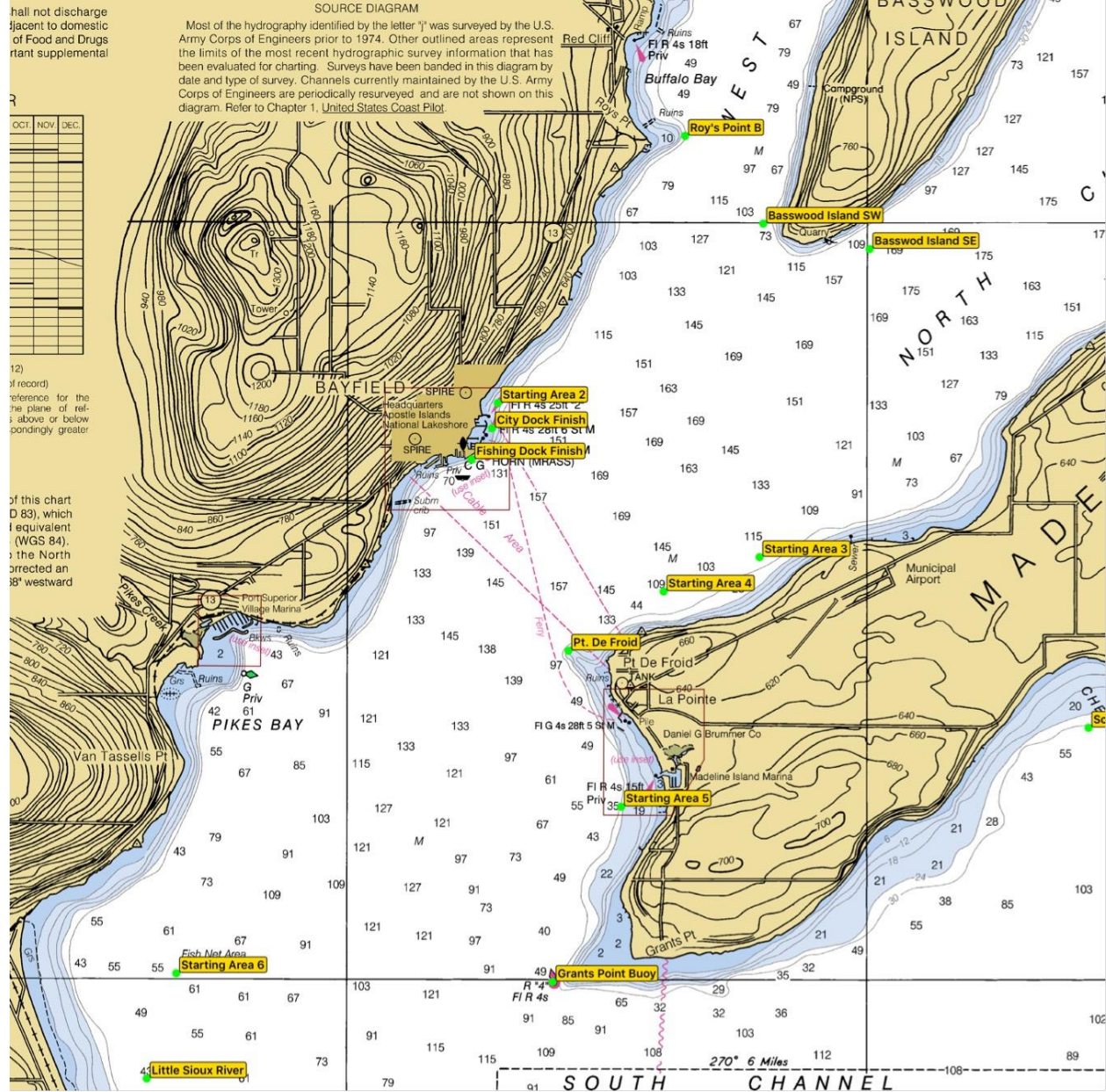
Appendix B – Racing Area



Note: All Mark locations are approximate.



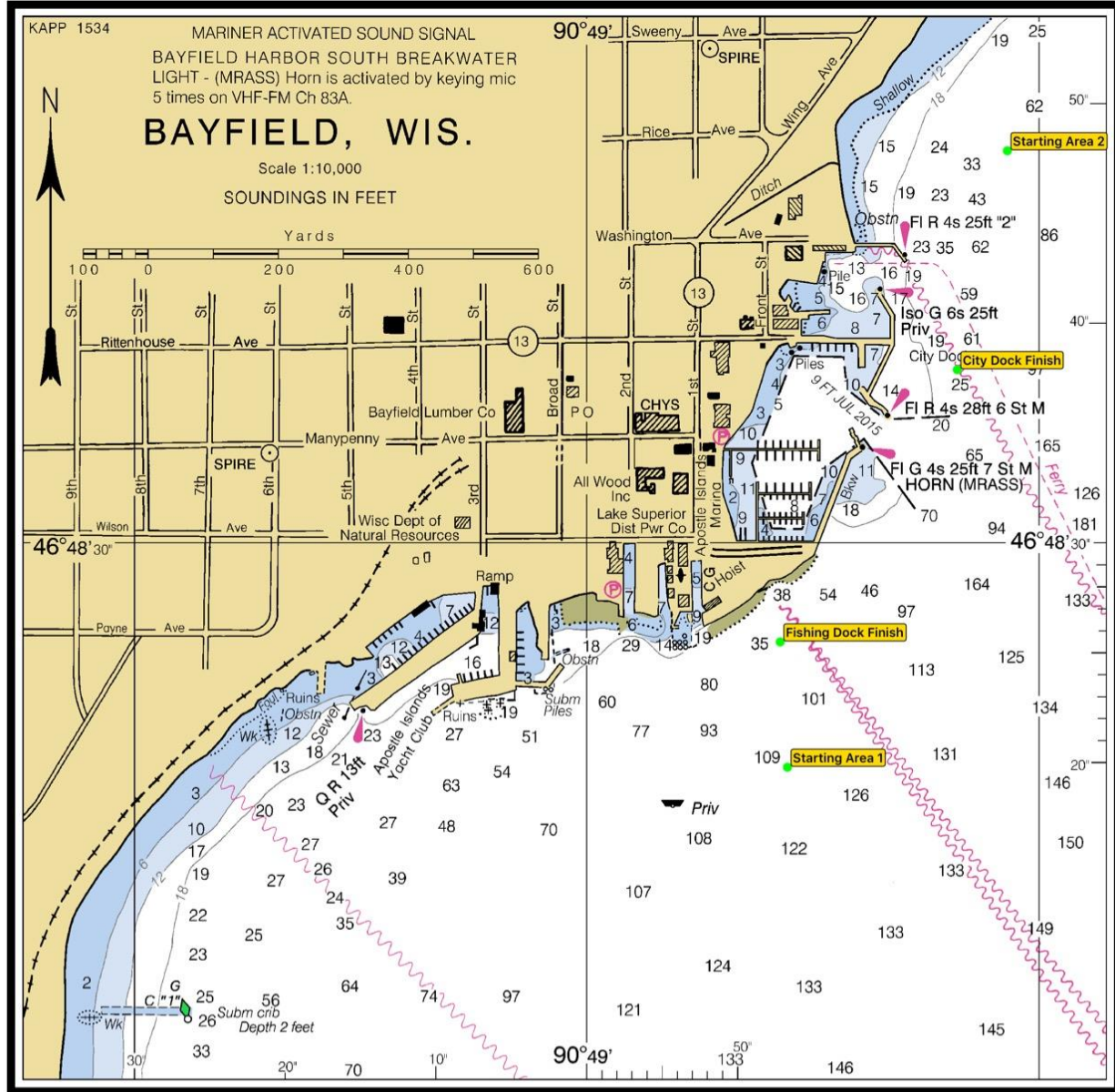
Appendix B – Racing Area



Note: All Mark locations are approximate.



Appendix B – Racing Area



Note: All Mark locations are approximate.



Appendix B – Racing Area

Starting Areas		DMS		DMM		DD	
Waypoint	Description	Latitude	Longitude	Latitude	Longitude	Latitude	Longitude
SA1	Starting Area 1 off USCG Station	46°48'19.8"N	90°48'46.7"W	46°48.330'N	90°48.778'W	46.805500N	90.812970W
SA2	Starting Area 2 - North of Bayfield Ferry Do	46°48'47.9"N	90°48'32.1"W	46°48.798'N	90°48.535'W	46.813300N	90.808910W
SA3	Starting Area 3 off Madeline Island Airport	46°47'46.9"N	90°46'00.9"W	46°47.782'N	90°46.014'W	46.796370N	90.766910W
SA4	Starting Area 4 off Pt. De Froid	46°47'33.3"N	90°46'56.2"W	46°47.555'N	90°46.936'W	46.792580N	90.782270W
SA5	Starting Area 5 off of La Pointe	46°46'08.0"N	90°47'20.7"W	46°46.133'N	90°47.344'W	46.768890N	90.789070W
SA6	Starting Area 6 - South of Pikes Bay	46°45'01.7"N	90°51'37.1"W	46°45.029'N	90°51.618'W	46.750480N	90.860310W

Finish Areas		DMS		DMM		DD	
Waypoint	Description	Latitude	Longitude	Latitude	Longitude	Latitude	Longitude
CDF	City Dock Finish	46°48'37.9"N	90°48'35.4"W	46°48.632'N	90°48.590'W	46.810530N	90.809840W
PDF	Fishing Dock Finish	46°48'25.5"N	90°48'47.1"W	46°48.425'N	90°48.786'W	46.807090N	90.813100W

Fixed Government Marks		DMS		DMM		DD	
Waypoint	Description	Latitude	Longitude	Latitude	Longitude	Latitude	Longitude
GP	Grants Point Buoy	46°44'58.6"N	90°48'00.0"W	46°44.976'N	90°48.001'W	46.749600N	90.800010W
GB1	Green Bouy 1 - South of Houghton Point	46°39'54.3"N	90°51'32.3"W	46°39.906'N	90°51.538'W	46.665090N	90.858970W
HPB	Houghton Point Buoy	46°41'48.7"N	90°50'46.0"W	46°41.812'N	90°50.766'W	46.696870N	90.846107W
RCB	Red Cliff Bouy	46°53'40.5"N	90°44'47.5"W	46°53.675'N	90°44.791'W	46.894580N	90.746520W

Drop Marks		DMS		DMM		DD	
Waypoint	Description	Latitude	Longitude	Latitude	Longitude	Latitude	Longitude
BSE	Basswood Island SE	46°49'49.0"N	90°44'57.3"W	46°49.816'N	90°44.954'W	46.830270N	90.749240W
BS	Basswood Island South Tip	46°49'47.0"N	90°45'41.0"W	46°49.784'N	90°45.683'W	46.829730N	90.761390W
BSW	Basswood Island SW	46°49'59.0"N	90°45'58.8"W	46°49.983'N	90°45.980'W	46.833060N	90.766330W
BNNW	Basswood Island NNW	46°52'22.2"N	90°44'20.7"W	46°52.370'N	90°44.344'W	46.872830N	90.739070W
BN	Basswood Island N	46°52'29.6"N	90°43'53.1"W	46°52.494'N	90°43.886'W	46.874890N	90.731430W
BNNE	Basswood Island NNE	46°52'20.4"N	90°43'18.1"W	46°52.340'N	90°43.301'W	46.872330N	90.721690W
BNE	Basswood Island NE	46°51'53.9"N	90°43'02.0"W	46°51.898'N	90°43.033'W	46.864970N	90.717220W
HSE	Hermit Island SE	46°52'40.0"N	90°41'03.2"W	46°52.666'N	90°41.054'W	46.877770N	90.684230W
LSR	Little Sioux River	46°44'20.1"N	90°51'54.0"W	46°44.335'N	90°51.900'W	46.738920N	90.865000W
NCA	North Channel A	46°51'30.0"N	90°41'28.4"W	46°51.500'N	90°41.474'W	46.858333N	90.691230W
PDF	Point De Froid	46°47'09.8"N	90°47'51.2"W	46°47.163'N	90°47.853'W	46.786050N	90.797550W
RPB	Roy's Point B	46°50'33.7"N	90°46'43.9"W	46°50.562'N	90°46.732'W	46.842700N	90.778870W
SC1	South Channel 1 - Chebomnicon Bay	46°46'39.3"N	90°42'50.9"W	46°46.656'N	90°42.848'W	46.777590N	90.714130W
SC2	South Channel 2 - North of Chequamegon I	46°42'24.9"N	90°43'08.0"W	46°42.415'N	90°43.133'W	46.706910N	90.718890W